



THE NORTHERN VIRGINIA

MINERAL CLUB
INC



Crystals are the flowers of the Mineral Kingdom

THE MINERAL NEWSLETTER

VOLUME 50 No. 6

JUNE 2009

Microminerals from Four Corners

The Northern Virginia Mineral Club will be having it's June meeting on the 22nd at 7:45 pm at Long Branch Nature Center in Arlington, VA. After the conclusion of the normal business meeting, Patrick E. Haynes will be giving a presentation about microminerals from the Four Corners states.

We look forward to seeing you at the meeting, and as usual don't hesitate to bring a guest!

On page 3 you can find a brief autobiography of our presenter.

Typically the NVMC invites our speaker to a dinner prior to the meeting, and club members are also invited to attend. As of the publishing of this newsletter, however, the dinner has not yet been coordinated.

Also find information on our Club Website: (note new URL)
<http://www.novamineralclub.org>

NVMC Schedule:

20 June Field Trip to Lucky Lake Gem Mine

22 June NVMC meeting at Long Branch Nature Center

27 June Boxley Aggregates Field Trip (pg. 6)

28 Sept. NVMC meeting at Long Branch Nature Center

21-22 Nov. NVMC Gem & Mineral Show

Note that there will be no NVMC meetings in July and August!

Club show 21-22 November

18th Annual Gem, Mineral & Fossil Show presented by the Northern Virginia Mineral Club and sponsored by GMU's Dept of Atmospheric, Oceanic and Earth Sciences.

Show site - George Mason University, Student Union Bldg II, Rte 123 & Brad-dock Rd, Fairfax, VA

Hrs: Saturday 10:00 AM - 6:00 PM, Sunday 10:00 AM - 4:00 PM

20 plus Dealers selling Minerals, Fossils, Crystals, Gems, Jewelry, Meteorites & more! Also, Demonstrations, Exhibits & Door Prizes.

Kid's Activities including Quizzes, Puzzles, Mini-mines & Fossil Dig. Silent Auction on Sunday afternoon.

Adults \$4, Seniors (65+) \$3, Teens (13-17) \$3, Children (12 & under) FREE, Scouts in uniform FREE and GMU students are FREE w/valid ID.

When on campus, look for signs to designated Mineral Show parking. We will probably be using GMU Parking Lot A (east) again this year.

Enter Lot A from Nottaway River Lane just off of Patriot Circle near GMU's Aquatic center. Parking in Lot A is free.

Look for our courtesy shuttle to the Mineral Show.

If walking, follow posted directional signs to Student Union II Bldg.

Contact: Tom Taafe

rockclctr@aol.com

Please contact Tom Taafe at 703-281-3767 or by email to volunteer in advance to help with our 18th Annual show. On Friday night, Nov 20 (roughly 5PM - 9PM) we will need volunteers to help set up the SUB II ballroom for the show which includes bringing club items from our nearby storage unit to GMU. On Sat & Sun, we will need numerous volunteers throughout the day at the Admission desk, manning the Kid's tables, providing daytime security/room monitors and helping with Sunday's Silent Auction. Sunday evening (4PM - 7PM) we need help taking down the show and returning club items to our storage unit.

Inside this issue:

May Minutes Meeting Photos	2
The Prez Says About our Presenter	3 3
June meeting Agenda Morefield Report	4 5
27 June Boxley Trip Morefield photos	6 7
Board of Directors Schedule CenPenn Gem Show	7 7 8
Region IV Annual Picnic	9
Back cover <u>NEW WEBSITE!!</u>	10

May Meeting Minutes

Recorded by Kathy Hrechka, Secretary

May 18, 2009 Minutes NVMC

President pro-tem, Wayne Sukow called the meeting to order at 7:45 p.m.

Guests included: Jarin, who collects everything in the way of minerals.

The minutes of the April 27 meeting were approved and seconded.

Committee Reports:

Ted Carver, Field Trip Chair, announced upcoming field trips; Moorefield Mine, Lucky Lake Mine, and Natural Mining Company.

Barry Remer, Nominating Committee Chair, solicited for a club president as well as a vice-president. He also read a letter from (acting manager Long Branch Nature Center) Alanzo thanking our club for the canopy we had recently donated to them. Remer also reported on the recent Wil-dacres retreat.

Tom Taaffe, Show Chair, gave a show update for Nov 21-22, 2009 to be held at GMU. Taaffee is requesting help over the summer with mailing list database, and advertising.

A request was made to update our club web-site. Mark Schultz will be notified.

Announcements:

Alex Brenner, junior member was recently awarded 1st place in the national Science Olympiad in Georgia. Feature story will be published in the June newsletter.

Rick Reiber received a request to swap VA minerals with a Geological Museum in Bunnell, FL.

George Reimherr shared an article from the Discover magazine 6-09 pertaining to the Russian discovery of Mars. They launched 20 probes since 1960. This October they will launch Phobos to collect soil samples to be returned to Earth within three years.

Wayne Sukow announced the EFMLS Annual convention/show Oct. 16-18, 2009, to be held at Bristol, CT. He is selling raffle tickets for the Ways & Means, Scholarship fund.

Mary Bateman, President of the EFMLS asked for a delegate from our club to attend the con-

vention.

Door prizes by Amber Sims were won by Robert Winsor, Marie Brown, and Milton Wiser.

Meeting adjourned by 8:30 p.m.

Break for Refreshments, provided by Karen Lewis.

Program: Lake Superior Agates, by Wayne Sukow, PhD.



The Prez Says PUT BLOOMS ON OUR HOBBY

IF MANY CONTRIBUTE, WE
HAVE A BEAUTIFUL

BOUQUET

THE NEWEST BLOOM IS THE
NEW NVMC WEB SITE:

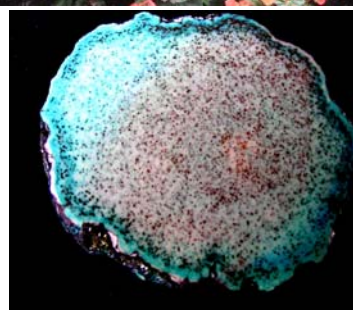
<http://www.novamincalclub.org>

The Prez

About our Speaker...

...“In His Own Words...”

At age 5 my parents gave me my first binocular microscope. An interest in minerals and crystals quickly developed. In 1979 I moved to New Mexico to attend the New Mexico Institute of Mining and Technology (aka the New Mexico School of Mines, or New Mexico Tech). After some short temporary positions as a field geologist I spent most of my career working for a construction company in SW Colorado and managed to spend some free time collecting mineral specimens in the four corners states, especially uranium/vanadium minerals from the Colorado Plateau. I have been peddling specimens part-time since 1979, including dealing at Tucson's Desert Inn in the early 80's, and with 20 years of selling at the Denver show. For the last 5 years I have been living in Las Vegas, Nevada and tailgating in Tucson.



I am a species collector, with about 2,300 species represented by about 4,000 specimens in the personal collection. Most of the items I collect and peddle have been specimens with micro crystals, so I have gotten involved in photomicrography. I have also written some stray articles for *Rocks and Minerals*. My surplus "inventory" has about 550 species represented by about 175 flats. There are also about 600 field flats. My wife, Mary Anne, tolerates this.

At our on Monday June 22 Patrick will give a slide show of self-collected minerals from New Mexico, Colorado, Utah and Arizona or

**MICROMINERALS FROM THE FOUR
CORNERS STATES.**

June Meeting Agenda

INFORMATIONAL AGENDA:

There will be no June Executive Board Meeting

Committee chairs are needed ...
Volunteers

Field Trips...John "Ted" Carver.

Announcements: Be prepared to have brochures etc. if possible or make a one-minute presentation and give the audience an email address or phone number for further information.

<http://www.novaminalclub.org>
Thank you Casper Voogt.

ACTION AGENDA:

Call to order at 7:45 pm.

Recognize Guests

Approval of May meeting minutes.

Old business...

New business... Identify action item and have motion prepared.

Change in per table cost at the November NVMC show. NVMC expenses are increasing especially: storage unit rental, \$75 per year increase and LBNC rental charge \$35 per month (\$350 for the year.) The current per table charge at the NVMC show is \$45. If, we have 70 tables then a \$5 per table increase to \$50 per table will cover the cost.

Support for NVMC Delegate to the 2009 East-

New Club Website!!

Casper Voogt is the new club Webmaster!! Check out our cool new website that Casper has done a fantastic job at getting started. The new website can be found at the following location:

<http://www.novaminalclub.org>

We now expect our club website to reflect current events and to be a source of information regarding the club as well as a place to get current and former newsletters.

ern Federation Annual Meeting in Bristol, CT. The first responsibility of the delegate is to participate in the annual meeting, which include voting on issues that come before the assembled delegates. The second responsibility of the delegate is to report back to the NVMC members on issues that came before the delegates, actions taken, and other mineral and lapidary items of general interest to NVMC members. The delegate should be familiar with the Eastern Federation Ops, programs, and issues. A first homework assignment might be to spend time on the Eastern website and review several recent newsletters and several older ones. My recommendation is to provide the delegate with support in the amount of \$300 for travel, lodging or per diem.

Adjourn meeting.

10-minute Refreshment break

June Program...Microminerals from the Four Corners States by Patrick E. Haynes

End Program and Depart for Home by 9:50 pm.

30 MAY Field Trip Report Morefield Mine

May 30, 2009 Moorefield Trip

Part III, Volume I of the NoVaMiCl Adventures

Rockhounding on the Edge

Our club received the invite to join in on the trip from Roanoke Field Trip Coordinator Dave Callahan, a fine gent who has had us along before. So away we went, some 17 of us. Our seventeen added to the perhaps eighty folks from other clubs made for an exuberant crowd indeed.

Now Moorefield is a tourist mine and there are those purists who shun the commercial evil. "Fie!" says I. So what if they salt the dump with mineralogical goodies for the uninitiated. Quartz crystals and amethyst chip for the kiddies. (Drat! I thought the crystal I'd found was genuine!) There is an abundance of Amazonite (purty blue) and Clevelandite, though they do keep the best bits to sell on Ebay, I suspect. At first we rummaged around for bits and pieces in the mine dump, wowwing over every found shard, or panning for micros in the sluiceway. Our own Alec Brenner was showing off his knowledge and impressing all within earshot with his invariably accurate identifications. In short, we were enjoying our dirty selves thoroughly.

As we were scouring the mud for that one fantastic chunk to make the day we were also waiting for the much anticipated mine dump. For those among you who have yet to see this spectacle, imagine hungry piranhas and a goat in shallow water. The thin veneer of civilization is torn away revealing the true animalian nature of the rabid rock hound. People crowd, push and leap over one another in a frantic race to snatch up the best shards first. A flurry of dust, arms and legs and the noise of stone dropping in bucket bottoms punctuated by the shouts of victorious and the howls of defeated. One observer found this display to be shocking, or at least amusing. I'm talking about you, Deepak.

I saw none of this for I, your humble reporter, was knee deep in the fray. Yes, and I got some good stuff too. Is it too telling of my psyche to say I found it fun? If it is, then, by all means, I didn't.

Afterwards we, the NoVaMiCl members gathered

for lunch. Nice though the feast was it was nearly a disaster. Robert Winsor was to bring the grill and had not been seen. Amid a plethora of oaths and curses who should show up but the inestimable Mr. Winsor and his lovely wife Beth with not only the grill, but burgers, buns and charcoal. Heroes! Our opinions reversed instantly, (we're a fickle lot).

Many members then dispersed to take the mine tour, visitation of the various veins of blue and white deep within terra firma. I'm told it was a marvelous, if ladder filled, journey. Members of our crew traveled to the 45, 60 and 90 foot levels. I didn't go as I had a date with a burger.

After a bit there was a second mine dump. I missed it, so instead spoke with Sam Dunaway, the owner. Seems there have been no takers for the purchase of the mine over the last year. He's asking 500k for the whole works for those of you interested in blowing off the dust of DC in exchange for overalls and explosives. Tempting, I'm sure. If you decide in favor of the stone life, remember, you heard it here first. I'll take my commission in Amazonite.

Lastly, Sunday I took a bucket of specimens down to my neighbor who is a professional mason. He sawed several pieces into flat slabs and the polished 5 of them, a 15 step process. It's amazing how they shine. Now I have some very cool coasters. <advertisement> He'll do the same for you for 50 bucks an hour. Contact me at jicarve@msn.com <advertisement>

More Photos on Page 7!



New NVMC member Ben Burnet standing in the mine.

Boxley Aggregates Field Trip 27 June

COMBINED MINERAL COLLECT- ING FIELD TRIP

THE GEM AND MINERAL SOCIETY OF
LYNCHBURG, VA. INC.

THE ROANOKE VALLEY MINERAL AND GEM SO-
CIETY INC.

NORTHERN VIRGINIA MINERAL CLUB

Saturday, JUNE 27, 2009

Boxley Aggregates

Mt. Athos Quarry

Lynchburg, VA.

9AM to 1 PM

Sign-up is required, call me, email me or sign-up at
the meeting

COLLECTING: Some of the minerals we have collected in the past 12 years are white and pink **Calcite**, pink **Marble**, **Feldspar**, **Quartz**, **Ilmenite**, **Epidote**, **Pyrite**, **Actinolite**, **Chlorite**, **Muscovite**, **Magnetite**, **Hematite**, **Limonite**, **Rutile**, **Manganite**, **Cuprite**, **Chalcopyrite**, **Bornite**, **Malachite**, **Sphene**, **Apatite** and **Stilbite**. Also reported to occur are **Byssolite**, **Tremolite**, **Chrysocolla**, **Heulandite** and **Azurite**.

Remember that the availability of these minerals depends on where they are working in the quarry at the time of the field trip and that some of the occurrences are very small.

ASSEMBLY TIME: 8:30 to 8:45 AM. At the Quarry. You will need sufficient time to read the required Boxley Hazard Training information, fill out and sign the Hazard Training Certificate and sign the required Boxley release form. There will also be a brief review of the safety regulations, which will be strictly enforced. All of this must be completed before we enter the quarry about 9:00 AM.

LOCATION: From Lynchburg, take US 460 East bypass to the US 460 / 501 Campbell Avenue interchange on the east side of Lynchburg. From this interchange, continue on US 460 East and drive about 3.5 miles to the Mt Athos Road interchange. Exit here and go about 3/10 mile, turning right on Rt. 609 Stage Road. Continue on Stage Road 9/10 mile and at the top of a hill, Stage Road veers off to the left. Continue on Stage Road 4/10 mile to the bottom of the hill and the Boxley Aggregates Quarry will be on your right. Park in the parking lot of the big new cinder block office on the left. Do not block the road.

If you will be driving from Roanoke or points to the West of Lynchburg and would like to follow us, meet me at the Sheetz Gas Station parking lot under the gas price sign, in New London at the intersection of US 460 and Route 811. There is a traffic light and an Exxon Convenience Store on the opposite corner. I will **DEPART PROMPTLY at 8:00AM**

EQUIPMENT: The Boxley Quarries are very safety-conscious. Standard quarry gear is required. Hard hats, steel-toe boots or other substantial boots and safety glasses. Good protective clothing and gloves should be worn. It could be very cold, wet or hot in the quarry, so dress according to the weather forecast that morning. Be sure to bring plenty of water and snacks. Bring your own collecting equipment such as hammers, chisels, buckets and newspaper to wrap your delicate specimens. We will be allowed to drive into the quarry. Bring rain gear in case of bad weather.

AGE LIMIT: Children of all ages will be allowed but it will be the parent's responsibility to keep them under control at all times and see that they obey all the safety requirements. The same dress requirements apply. Pets will be allowed only if they are under total control and will not be allowed to roam free.

NOTE: Severe weather or other crisis out of our control may result in the canceling or rescheduling of this trip. If there is any question, please call me to confirm the trip.

CONTACT: Ted Carver

Email jtcarve@msn.com

More Photos from Morefield



That Hexagon is a ~6" diameter crystal of Aquamarine!
WOW!! (Found in the ceiling at the 60 foot level.)



Huge "book" mica abounds in this mine.



Crystal faces of amazonite are apparent in this photo of
a ~6" long, ~4" diameter crystal.

The Board of Directors

Do you have a question for one of our Board members? To the right you can find email addresses and phone numbers for club officers (Note imminent changes for Prez and Vice Prez!).

Also, if you would like to attend a meeting of the Board of Directors, please contact Wayne Sukow and let him know ahead of time. All club members are welcome at Board meetings!

Board Meetings are held the second Thursday of each month at 7:30pm at Wayne's home in Fairfax. Please contact Wayne for directions.

Schedule

20 June Field Trip to Lucky Lake Gem Mine

20 June Region IV Picnic at Lake Anna (pg. 9)

22 June NVMC meeting at Long Branch Nature Center

27 June Boxley Aggregates Field Trip (pg. 6)

12-13 Sept. CenPenn Gem Show

28 Sept. NVMC meeting at Long Branch Nature Center

21-22 Nov. NVMC Gem & Mineral Show

Note that there will be no NVMC meetings in July and August!

President (Interim): Wayne Sukow

d8olite @ fastmail.fm (703) 280-8108

Vice President: Vacant

Secretary: Kathy Hrechka

kshrechka @ msn.com (703) 765-3187

Treasurer: Rick Reiber

rickgr3 @ comcast.net (703) 578-4224

44th ANNUAL
GEM MINERAL & JEWELRY SHOW



<http://www.rockandmineral.org>



SEPTEMBER 12 and 13, 2009

SAT. 10 am – 6 pm

SUN. 10 am – 5 pm

(New Location)

ZEMBO SHRINE

THIRD AND DIVISION STREETS, HARRISBURG, PA

**Vendors of Jewelry, Beads,
Gemstones, Minerals and Fossils**

CHILDREN'S ACTIVITIES

FREE PRIZES

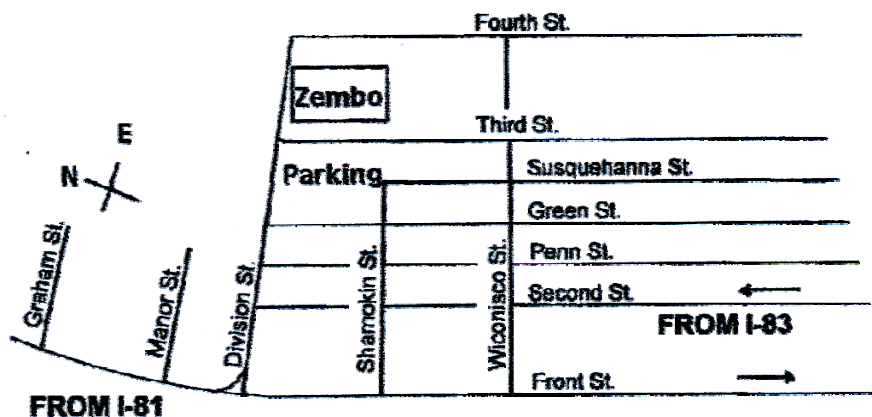
EDUCATIONAL EXHIBITS

ADMISSION \$5.00

\$1.00 discount on each of two adult admissions with flier

Maximum Value \$2.00

CHILDREN 12 AND UNDER AND SCOUTS IN UNIFORM FREE WITH ADULT



MAY BE REPRODUCED

Date: June 20, 2009**Time: 10:00-3:00**

Region IV Annual Picnic & Swap

Lake Anna State Park ★ Shelter #3 (not in picture below)



★
Bring your lawn chair

Bring your own drinks and a dish to share

Bring your swap materials ★

Bring a door prize donation and surplus items for the treasure box.

Directions: I-95 to exit #118 Thornburg; West on Rte 606 to Rte 208; Turn left onto Rte 208; Continue to Rte 601 and turn right onto Rte 601 (turn is just past Lake Anna Marine Supplies & Hardware); Continue on Rte 601 then turn left into Park; follow park road to lake, the physical address for the park is: 6800 Lawyers Road Spotsylvania VA 22551 and when you arrive ask a Ranger for directions to Shelter #3. Email or call with any questions: Dee Tinsley, EFMLS Region IV VP flydeetin@gmail.com; 434-221-0864

Highlights: Mineral Swapping, renowned Region IV Treasure Box, and an outstanding Picnic Pot Luck Lunch.

10:00 AM- Swapping begins early, so arrive early for the best swapping options, Don't forget~ no selling allowed in the park.

12:00- Lunch will feature Lynchburg Gem and Mineral Society's famous Barbecue or "sugar cured ham". Please bring your own drinks and a dish to share.

1:30PM- A fun Auction of the weird, wild, funny and unusual—please donate items for the auction. These should be at least somewhat hobby related.

Door Prizes- Please bring one to donate—everyone loves to win. The more donations, the more winners we will have.



NVMC Newsletter Editor
Robert Winsor
35740 Roundleaf Ct.
Round Hill, VA 20141

Phone: 540-751-0922
Please call between 7pm and 9pm
E-mail: phototech @ comcast.net



NEW!! PLEASE VISIT OUR WEBSITE:
[HTTP://www.novamineralclub.org](http://www.novamineralclub.org)

The Northern Virginia Mineral Club

You can send your Newsletter articles to:

Robert Winsor
35740 Roundleaf Ct.
Round Hill, VA 20141

Or via email: phototech @ comcast.net

Visitors are Always Welcome at our Club Meetings.

**THERE IS NO MEETING
IN JULY AND AUGUST**

**ENJOY YOUR SUMMER
ENJOY FIELD TRIPS**

**BRING BACK STORIES
TO SHARE AT THE SEPT
MEETING**

**BRING SAMPLES FROM
YOUR TRIPS!**

Purpose: To promote, educate and encourage interest in geology, mineralogy, lapidary arts and related sciences. The society is a member of Eastern Federation of Mineralogical and Lapidary Societies (EFMLS)

<http://www.amfed.org/efmls> and American Federation of Mineralogical Societies (AFMS)

<http://www.amfed.org>.

Dues: Due by 1 January of each year; \$15.00 Individual, \$20.00 Family, and \$6.00 Junior (under 16, sponsored by an adult member).

Meetings are held at 7:45 p.m. on the fourth Monday of each month (except

May and December*) at [Long Branch Nature Center](#), 625 Carlin Springs Road, Arlington, VA 22204. Phone (703) 228-6535. (No meeting in July & August.)

(*Changes announced in the newsletter.) Snow schedule - Arlington county schools.